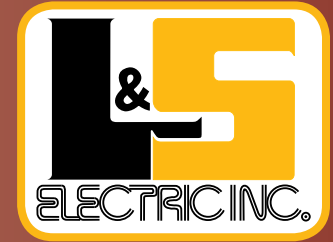


Motor Current Analysis



Dedicated People, Quality
Products, and Above All, Service.

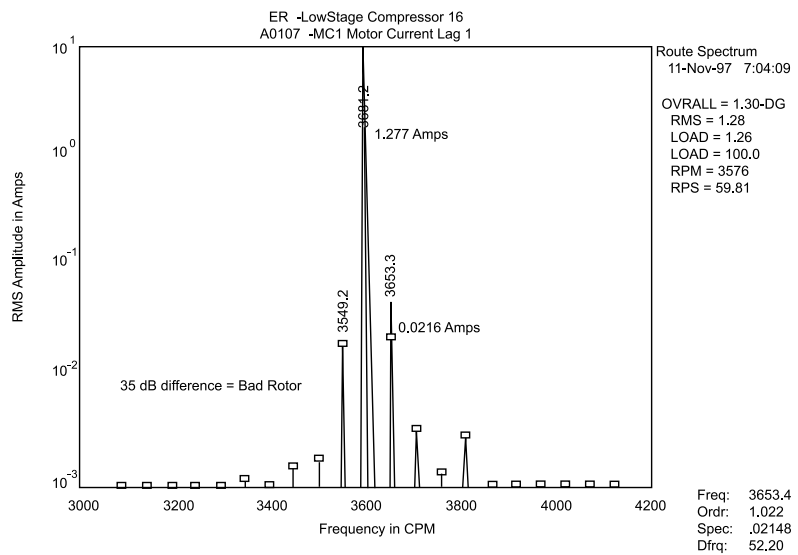
Reduce Motor Downtime with our Accurate On-Line Diagnostic Tool

Motor current analysis is an effective tool for diagnosing problems within the rotor circuit of induction and wound rotor motors such as the following:

- Broken rotor bars
- Cracked end rings and weld joints
- Blow holes and casting porosities in die cast rotors
- High resistive joints in wound rotor motors

Benefits

- Current analysis is performed on motors operating under normal working conditions. This allows for easy scheduling and very accurate test results.
- Motors can be scheduled for repair, reducing downtime and the cost of catastrophic failures.
- Test results are stored in our computerized Predictive Maintenance Database for trending or future use.
- Current analysis can be used in conjunction with vibration analysis to help identify electrical vibration problems.



SAMPLE DIAGNOSTIC SPECTRUM



www.lselectric.com

SCHOFIELD

715.359.3155 or 800.283.8332

DULUTH

218.729.3375 or 800.943.9549

APPLETON

920.730.0203 or 800.283.5564

MENOMINEE

906.864.2500 or 800.864.2507

STURTEVANT

262.886.1875 or 800.367.7676

MINNEAPOLIS

763.780.3234 or 800.290.9320

ROTHSCHILD

715.359.3155 or 800.283.8332

HYDRO SOLUTIONS

715.359.3155 or 800.283.8332