

Automation & SCADA Systems



Dedicated People, Quality Products, and above all, Service

L&S Electric provides state-of-the-art Automation and SCADA systems for both new and retrofit applications.

Advantages

- Improved generating efficiencies
- Reduced operating costs
- Reduced maintenance costs
- Increased safety of personnel and equipment
- Accurate and efficient data acquisition and report generation

Features

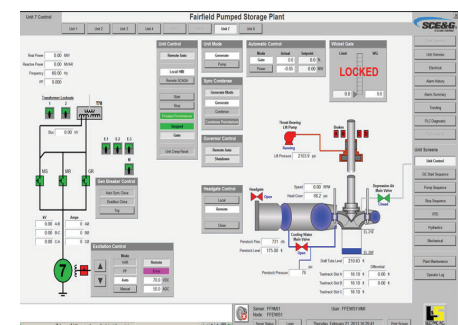
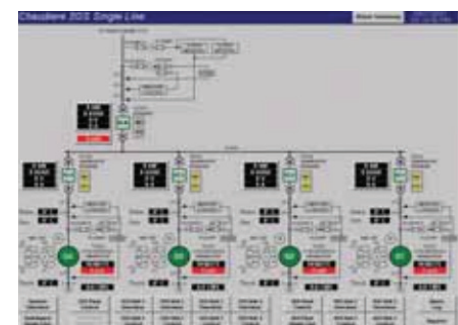
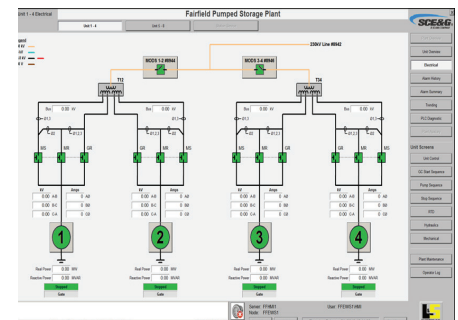
- Unattended monitoring of system conditions
- Remote control and monitoring from multiple locations
- High system integrity through redundant system architectures
- Eliminated downtime providing continuous generation
- Non-proprietary hardware and software

Unit Automation

- Governor control
- Black start
- Start and stop sequencing
- Synchronizing
- Efficiency control
- Position control
- Power control
- Flow control
- Excitation control
- Pump storage control
- Synchronous condensing control
- Protection
- GPS time stamping
- Sequence of Events
- Auxiliary system control

Plant Automation

- Water level control
- Flow control
- Optimization control
- Peaking control
- Joint control
- Priority based unit start and stop sequencing
- Cascaded plant control
- Isochronous load sharing
- Substation control
- Spillgate control



L&S Electric Engineering Division

Main Office
1810 County Hwy XX
Rothschild, WI 54474
877.258.5128

Canadian Office
5055 rue Viger
St-Hubert (Quebec) J3Y 8Y9
450.448.8880

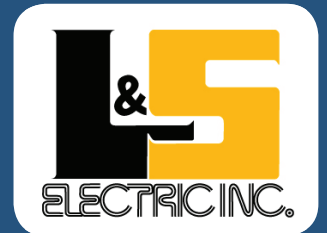
Proven Solutions for the Hydroelectric Industry

www.lselectric.com



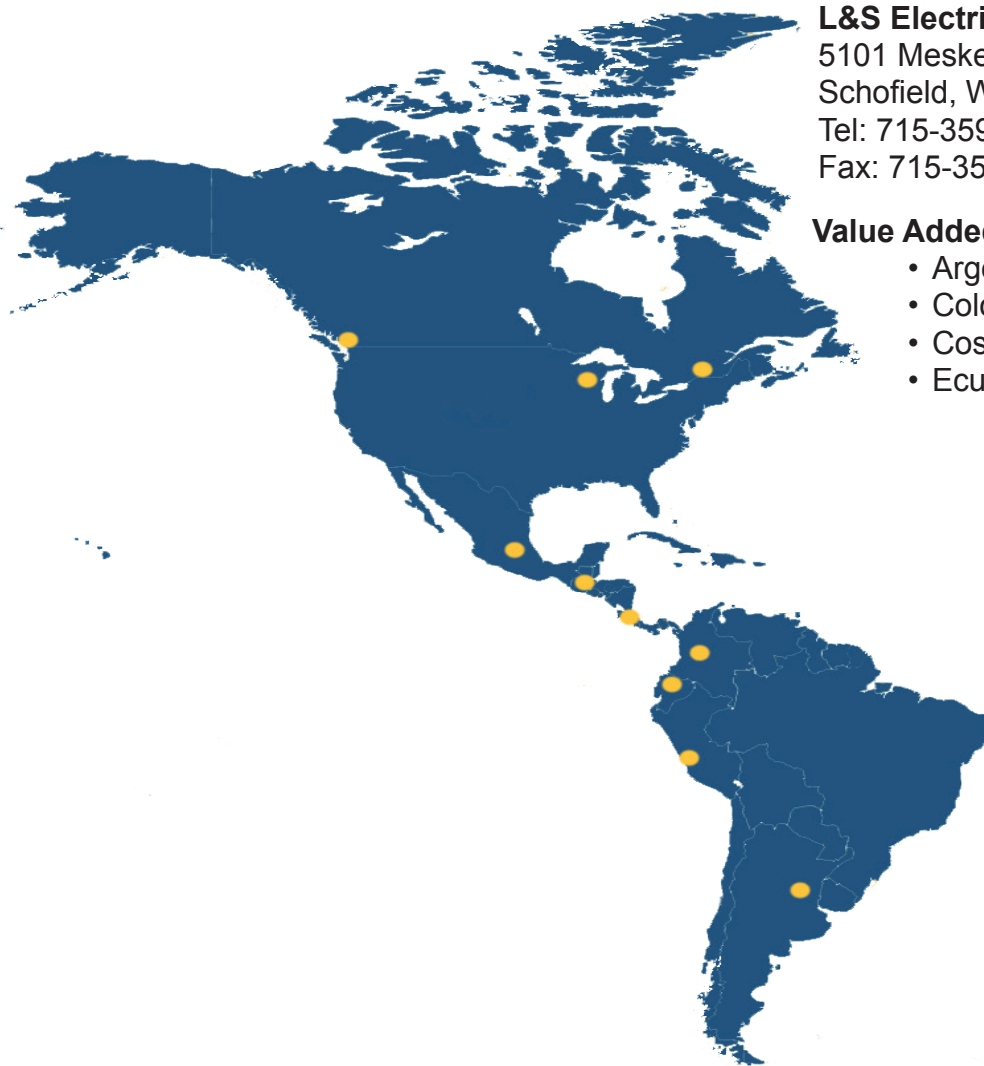
© L&S Electric 2014

Locations



*Dedicated People, Quality
Products, and above all, Service*

L&S Electric, Inc. is a worldwide leading supplier of integrated solutions for the hydroelectric industry. We serve clients throughout the United States, Canada, Asia, Europe, Central and South America.

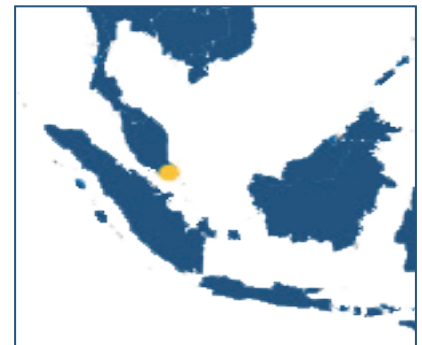


L&S Electric – Corporate

5101 Mesker St.
Schofield, WI 54476
Tel: 715-359-3155
Fax: 715-355-5931

Value Added Resellers (VAR) located in:

- Argentina
- Colombia
- Costa Rica
- Ecuador
- Guatemala
- Mexico
- Peru
- Singapore



L&S Electric Engineering Division

Main Office
1810 County Hwy XX
Rothschild, WI 54474
877.258.5128

Canadian Office
5055 rue Viger
St-Hubert (Quebec) J3Y 8Y9
450.448.8880

Proven Solutions for the Hydroelectric Industry

www.lselectric.com



© L&S Electric 2014